



RCA100 V100 User manual

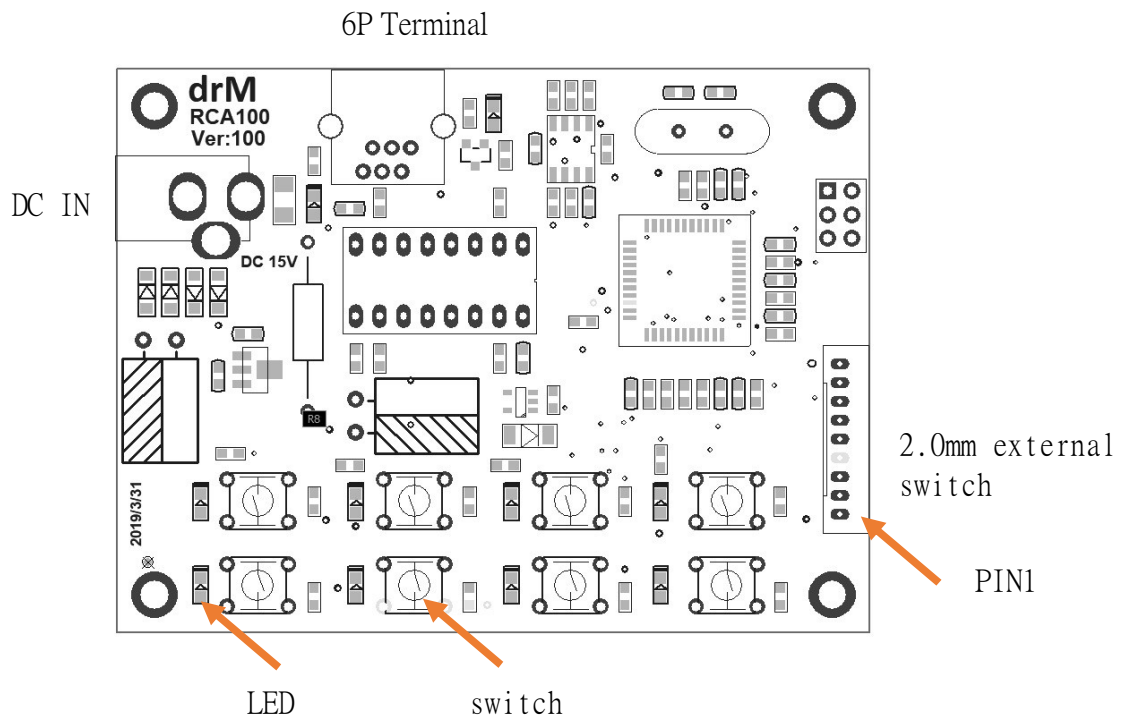
● Precautions

1. Please read the instruction manual carefully before use.
2. This product is not a toy and is not suitable for children under 14 years old.
3. Do not modify product parts to avoid damage.
4. Do not place conductive substances on the surface of the product.
5. RCA100 is only used for analog systems. If using K-AD800 on a DCC system, remove RCA100.

● Features

1. Connect K-AD800 as a control panel.
2. Eight buttons control 8 turnout outputs.
3. Eight LEDs show the status of the turnout.
4. The power supply uses 1A adapter below DC 17V.
5. 2.0mm connector, provide external switch.

● Connection Diagram



- | | |
|---|---|
| <ol style="list-style-type: none"> 1. DC IN 2. 6P terminal 3. External terminal 4. Switch 5. LED | <p>Power input terminal, power supply uses 1A adapter below 17V.</p> <p>Connect the K-AD800 turnout decoder.</p> <p>Connect an external key switch, PIN1 is the common point of all switches, and 8 points are connected to 8 external switches.</p> <p>8 buttons control K-AD800 8 switch output.</p> <p>8 LEDs respectively display the output status of turnout.</p> |
|---|---|